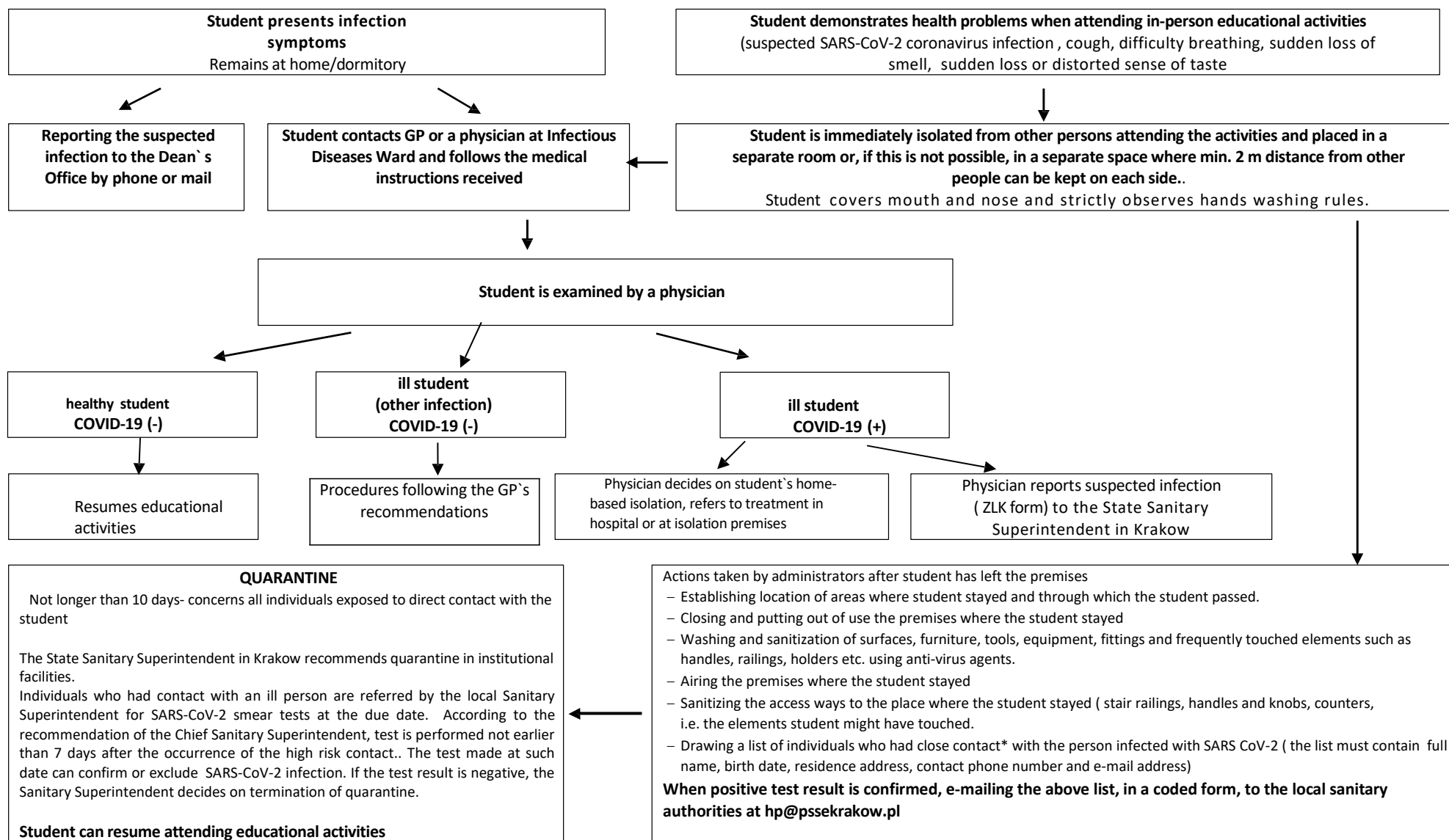


SARS-CoV-2 SAFETY PROCEDURES

For UJ CM students in case of SARS-CoV-2 coronavirus infection risk



* Definition of close contact: staying in the direct vicinity (face to face) with an infected person, at a distance smaller than 2 meters for over 15 minutes, direct physical contact with a COVID-19 positive individual (e.g. shaking hands), direct contact, without protective means, with secretions of a COVID-19 positive person (e.g. touching the used tissue, exposure to cough of a positive person), staying in the same room with a positive person for at least 15 minutes at work premises, conference rooms, communication routes, ablutions).

** Definition of student includes: undergraduate, doctoral or postgraduate student.